

Osborne



Public School

2020 Re-Entry Plan

September 8, 2020

Recent changes are highlighted.

This plan will be updated whenever new guidelines or directives are enacted by the school division or the province.

All revisions of the plan will be communicated to parents and made available on the school's website.

The staff of Osborne Public School are excited to resume classes this fall. We would like to thank our school community for their patience and support over the last half year as we have done our best to deal with a unique situation. As we prepare to return, people will notice some changes, but also much that is familiar and comforting. We are a small school with a big heart and together we will meet the challenges and celebrate the opportunities that our new reality provides.

The purpose of this plan is to provide information about the new procedures and expectations at our school. These practices align with the guidelines provided in the [SRPSD Return to School Plan](#) and the [Re-Open Saskatchewan Primary and Secondary Educational Institution Guidelines](#).

Osborne Public School is committed to work with the Saskatchewan Rivers Public School Division, provincial authorities and our families to support the health and safety of students, staff, and all stakeholders during the resumption of classes. Details about our plan can be found on the following pages and has been organized into the following categories.

1. Mental Health and Social-Emotional Supports
2. Staff Supports and Safety
3. Student Supports and Safety
4. Curriculum and Instruction
5. Extracurricular activities
6. Access to School Facilities and External Services
7. Facilities and Maintenance
8. Transportation
9. Parent Engagement and Support

The logo for Osborne Public School features the word "Osborne" in a yellow, cursive font. A yellow arrow points from the end of the word towards the right.

Small school. Big heart.

Mental Health and Social-Emotional Supports

At Osborne Public School we recognize that students and families have varying degrees of comfort with returning to school. Our staff are excited and working hard to create a safe and welcoming environment to greet our students.

- **Steps are being taken ensure that students return to a school environment that is joyful and inspiring.** New bulletin boards are being created. Creative plans for us to connect and celebrate as a school are being developed. Most importantly, students will be greeted by staff who will care for and nurture them, as we have always done.
- **Staff have been trained on how to recognize the signs of stress and trauma.** The gradual resumption of classes, as well as increased supervision during recess and lunch, will better allow for mental health issues to be recognized and appropriate supports to be put in place.
- Our **school social worker** will continue to support our students.
- **Teachers have access to professionally developed resources that address mental health issues such as stress and anxiety.** These include:
 - Take Charge of Your Worries
 - Healthy Mind, Healthy Body
 - Teen Mental Health.org
- **Staff will be in contact with families throughout the year** so that concerns can be addressed quickly. One example is our *Meet the Staff* evening on September 1.

Staff Supports and Safety

- **All staff members are expected to self-monitor for symptoms of COVID-19** and stay home if they exhibit symptoms. Sub-plans will be sent to the school electronically and must include COVID-19 safety guidelines. See the SRPSD School Re-Entry Plan for complete details.
- **Masks or other appropriate personal protective equipment (PPE) will be worn by staff at all times while students are in the school.** At other times, social distancing protocols will be observed.
- **Staff movement between classes will be minimized.** Schedules will be designed to keep staff within a specific cohort of students. Mr. Walker, Mrs. Frantik, Mrs. Grimard, and Mr. Bohman will be considered to be in all cohorts.
- **Staff will sanitize when entering or leaving a learning area.** Smartboards, sound-field microphones, and other instructional aids will be sanitized between users. Students will not touch smartboards.

The logo for Osborne Public School, featuring the word "Osborne" in a yellow, cursive font with a yellow arrow pointing to the right underneath it.

Small school. Big heart.

Student Supports and Safety (Hygiene, Limiting Physical Contact and Shared Materials)

- Any student showing symptoms of COVID-19 must remain at home. See Appendix A for details.
- If a student develops symptoms while at school, they will be supervised in one of two isolation areas until a parent arrives to take them home. Details are in the [SRPSD Re-entry Plan](#). See also Appendix B for the Illness in School flowchart.
- Students will be instructed in safety and hygiene procedures such as proper handwashing and mask use. Classroom routines will be established to minimize physical contact and maximize the distance between students.
- Masks are required for all students in grades 4-8 while in the school. Masks and other PPE are strongly encouraged for younger students. We will work towards having ALL students wearing PPE while in the building. Exemptions may be considered based on medical advice.
 - Masks must meet Health Canada guidelines. This means they fit securely and are made of 2 layers of tightly woven fabric.
- To minimize congestion around doorways, students will enter and exit by class, when a staff member determines that it is safe to do so.
- Students will sanitize when entering and exiting a learning area.
- Students will use assigned washrooms.
 - K-5 will use the main washrooms.
 - 6-8 will use the gym washrooms when possible.
- Water fountains will be closed until further notice. Students should bring a reusable water bottle from home. Water bottles must not be shared.
- Students will have assigned areas for recess. Extra supervisors will be on duty to allow students to be spaced apart and to encourage non-contact activities.
- Students will eat lunch in their classrooms. Food is not to be shared. Students will not be permitted to move between rooms during this time.
 - Nutrition programs, such as hot lunch and milk, will continue but food will be delivered by Mr. Walker or Mrs. Frantik.
 - Classroom EAs are designated to distribute emergency snacks and lunches.
- Students will use their own school supplies as much as possible. Math manipulatives and other materials will be assigned to specific students and stored separately. Shared materials, such as iPads, Chromebooks, and laptops will be sanitized between users.
- Group work will occur by assigning students to pods within each class. These groups will be consistent over an extended period of time.
- Inclusion is a core value at Osborne Public School and students with intensive needs will continue to have access to appropriate supports.
 - Existing eLLPs and safety plans will be reviewed and updated, in collaboration with all stakeholders, in order to ensure student health and safety.



Small school. Big heart.

- In situations where medical restrictions make it unsafe for students to attend school, other options such as remote learning or a temporary exclusion may be necessary (SRPSD AP154).

Curriculum and Instruction

Academic development may not be the first concern of parents and staff as students return to school but it will continue to be a fundamental part of what we do at Osborne Public School. We believe that it is important for students to resume their studies and will introduce academic programming to each student in a way that is appropriate for them. Teachers will assess the needs of our students and adapt their instruction, just as they have always done.

- The school year will include a **transition period** to allow for the integration of new procedures.
 - September 3 and 4 will be non-instructional preparation days.
 - Osborne Public School will utilize a staggered start to reduce the number of students in classrooms while new procedures are being taught.
 - Cohort A will attend September 8 and 10.
 - Cohort B will attend September 9 and 11.
- **Classroom instruction will be forward facing.** Group work and discussions will follow the procedures outlined above.
- **Teachers will utilize outdoor learning opportunities when possible.** Students are asked to dress for the weather (sweater, hat, jacket, etc.). Physical distancing within the classroom will be utilized as much as possible.
- **Some subjects may be taught in blocs** to minimize the number of resources being used at one time or the number of classes sharing these materials. (Social Studies/Science, Art/Health, etc.)
- **Only essential material should be sent between home and school.** Electronic forms of communication will be used (Seesaw, Google Classroom, email). Personal items should be left at home.
- **Large group assemblies and collaborations between classes will not be permitted.**
 - Grade 7s from Mr. Bragg's and Mr. Bennington's classes will take PAA together but will be kept separate as much as possible.
- **Students will not change for PE classes** and should wear something they can participate in comfortably on the days they have these classes.
- **Singing indoors is not permitted at this time.** This includes classroom activities such as singing rhymes and *O Canada*.

Osborne

Small school. Big heart.

Extra-Curricular Activities

- Extracurricular activities are postponed until further notice.

Access to School Facilities and External Services

Parents and family members continue to be welcome at Osborne Public School. However, in order to ensure the safety of our students, and at the direction of SRPSD, parents and caregivers are expected to limit their physical presence in the school to situations that are essential.

- **Families are asked to make an appointment before coming to the school** and choose one person to attend.
- When arriving at the school, **parents are asked to call the office** and someone will come out to their vehicle.
- **If it is necessary to enter the school**, you must use hand sanitizer, and report to the office. All visitors will be required to sign in as per contact tracing practices promoted by the Saskatchewan Health Authority.
- **Community and third-party rentals and usage will not be permitted until further notice.**

Facilities and Maintenance (Cleaning and Sanitation)

- **Increased sanitation practices** including the use of long-term anti-microbial products and increased cleaning of high-touch areas have been implemented.
- Barriers, signage, and warning tape will be used to ensure efficient traffic flow.
- More details are available in the SRPSD School Re-Entry Plan.

Transportation

- Parents are encouraged to drive their children to school.
- **Students (grade 4-12) on buses must wear masks and sit in assigned seats.** Students from the same family/household will be asked to sit together. No guest ridership is permitted.
- Field trips are cancelled until further notice.
- **Hand sanitizer will be available and is recommended for students entering the bus.**
- Regular cleaning and sanitizing of buses will occur in accordance with SRPSD transportation department plans. Drivers will wear masks or face shields.

The logo for Osborne Public School, featuring the word "Osborne" in a yellow, cursive font with a yellow arrow pointing to the right underneath it.

Small school. Big heart.

Parent Engagement and Support (Communication)

- Communication will occur by phone, email, and Seesaw.
- The school's website (<https://os.srsd119.ca>) will be updated regularly.
- **Meet the Staff event will be on September 1** at the rink. SHA protocols will apply.
- **The School Community Council** will meet in September to set a schedule and identify priorities.

Osborne

Small school. Big heart.

Appendix A – COVID-19 Symptoms

Symptoms of COVID-19 are similar to other respiratory illnesses including the flu and common cold.

Symptoms may include one or more of the following:

- fever
- cough
- headache
- muscle and/or joint aches and pains
- sore throat
- chills
- runny nose
- nasal congestion
- conjunctivitis
- dizziness
- fatigue
- nausea/vomiting
- diarrhea
- loss of appetite (difficulty feeding for children)
- altered sense of taste or smell
- shortness of breath
- difficulty breathing

These may be unexplained new or worsening symptoms, and may vary. Some people experience mild symptoms or no symptoms at all. In more severe cases, infection can cause pneumonia, severe acute respiratory syndrome, kidney failure and even death. Older people or those with chronic illnesses are at higher risk for a more severe form of the disease.

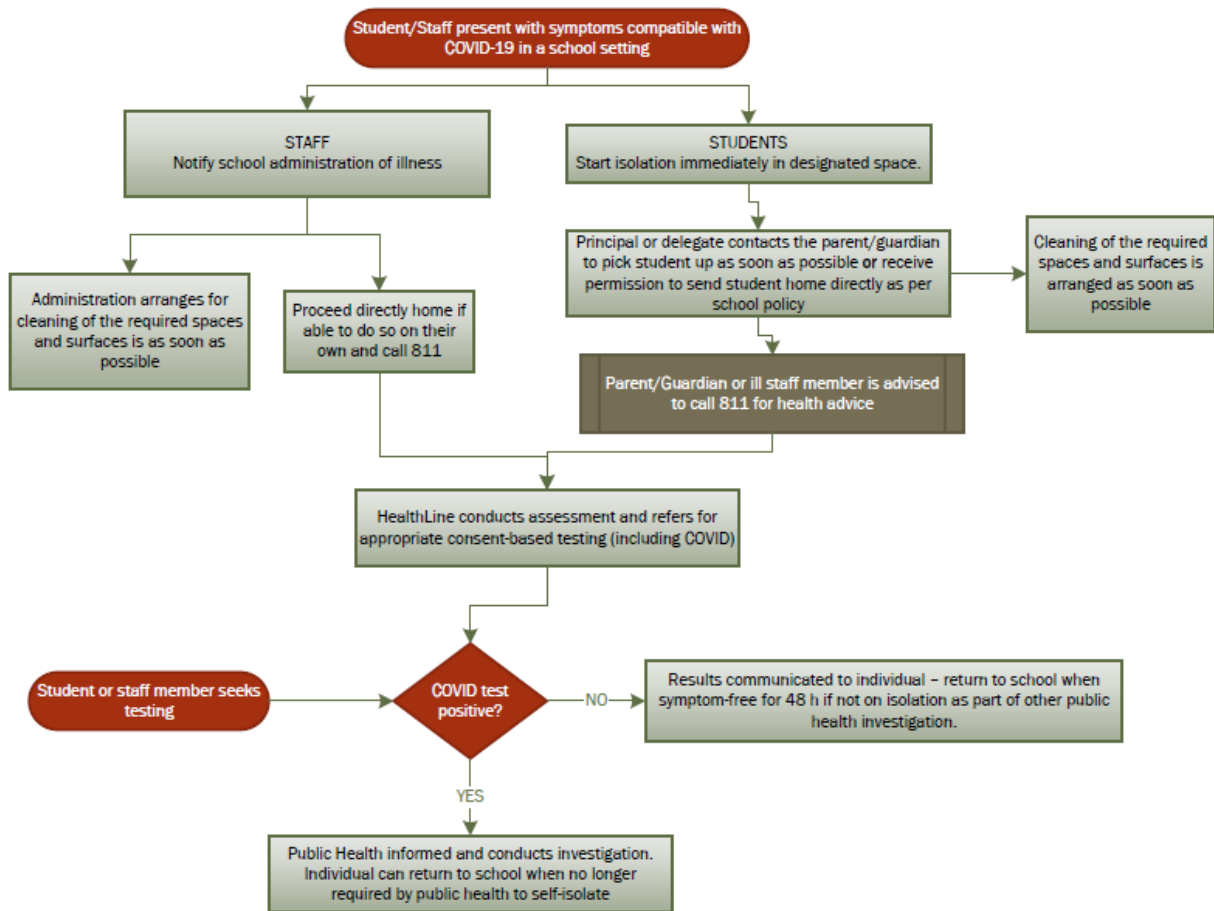
Taken from the Government of Saskatchewan website (August 22, 2020)

<https://www.saskatchewan.ca/government/health-care-administration-and-provider-resources/treatment-procedures-and-guidelines/emerging-public-health-issues/2019-novel-coronavirus/about-covid-19#testing>

The logo for Osborne, featuring the word "Osborne" in a yellow, cursive font with a yellow arrow pointing to the right underneath it.

Small school. Big heart.

Appendix B – Flow Chart



Small school. Big heart.